

EDHEC ALTERNATIVE INDEX

CONVERTIBLE ARBITRAGE

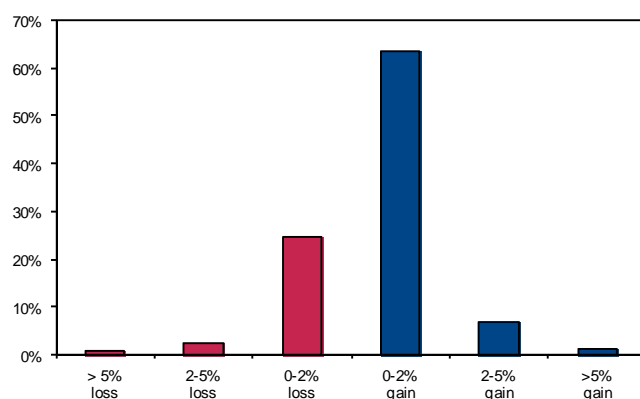
Convertible Arbitrage Funds attempt to exploit anomalies in prices of corporate securities that are convertible into common stocks (convertible bonds, warrants and convertible preferred stocks). Managers typically buy (or sometimes sell) these securities and then hedge part or all of the associated risks by shorting the stock

	Jan	Feb	March	Apr	May	June	July	Aug	Sept	Oct	Nov	Dec	YTD
2016	-0.02%	-0.02%	1.70%	1.40%	0.75%	0.16%	1.54%	1.02%	0.70%	0.27%	0.31%	0.90%	6.47%
2017	1.47%	0.72%	-0.02%	0.44%	0.22%	0.32%	0.84%	-0.12%	0.65%	0.60%	0.02%	0.25%	5.52%
2018	0.84%	-0.05%	-0.14%	0.32%	-0.26%	0.16%	0.21%	0.24%	0.34%	-0.73%	n.a.	n.a.	0.93%

RISK PROFILE

Risk Profile	Edhec Convertible Arbitrage Index	S&P 500	Lehman Treasury
Monthly Std Dev Ann'd	6.01%	14.28%	4.43%
Sharpe Ratio	0.26	0.23	0.00
Information ratio	-0.14	n.a.	n.a.
Min. Monthly Return	-12.37%	-16.80%	-4.39%
Max. Monthly Return	6.1%	10.93%	5.31%
Mean Monthly Return	0.45%	0.59%	0.33%
Median Monthly Return	0.53%	1.07%	0.36%
Exc. Kurtosis	19.98	1.38	1.53
Skewness	-2.63	-0.67	0.04
% of winning Months	71.96%	65.89%	58.41%
Average Winning Return	1.1%	2.86%	1.13%
% of losing Months	28.04%	34.11%	41.59%
Average Losing Return	-1.23%	-3.80%	-0.80%

RETURN DISTRIBUTION



CORRELATION ANALYSIS

Correlation Analysis	Edhec Convertible Arbitrage Index	S&P 500	Lehman Treasury
S&P 500	0.48	1.00	-0.34
S&P 500 Value	0.47	0.97	-0.34
S&P 500 Growth	0.47	0.97	-0.32
S&P Mid Cap	0.53	0.92	-0.33
S&P Small Cap	0.44	0.87	-0.34
Lehman Treasury	-0.17	-0.34	1.00
Baa-Aaa	0.17	-0.07	0.06
Chg in Baa - Aaa	-0.27	-0.12	0.17
10 years - 3 Months	-0.03	-0.05	0.12
Chg in 10 years - 3 Months	-0.05	-0.03	-0.05
VIX	-0.16	-0.44	0.27
Chg in VIX	-0.38	-0.67	0.19

CUMULATIVE RETURNS

