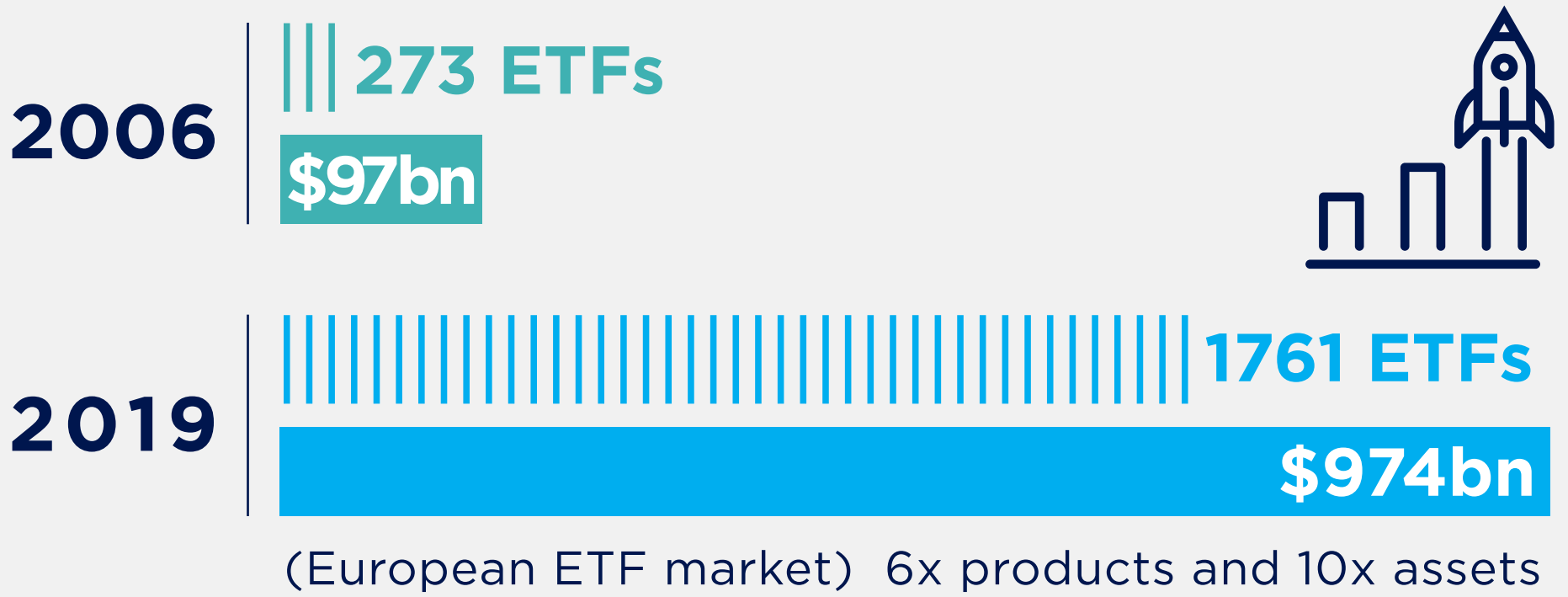


The evolution of ETF investing

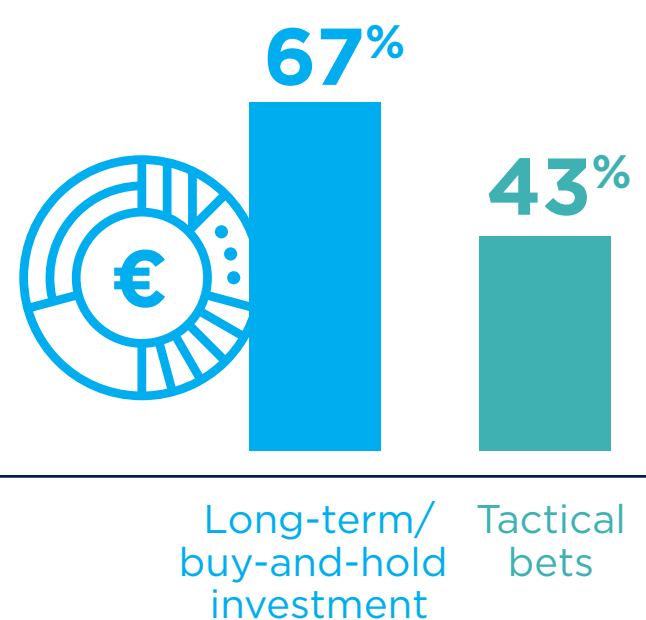
The **2020 EDHEC European ETF, Smart Beta and Factor Investing Survey**, explored the evolution of the ETF landscape with 191 senior European investment professionals. Here we take a look at their past, current and future use of ETFs within investment portfolio.

Growth of the sector

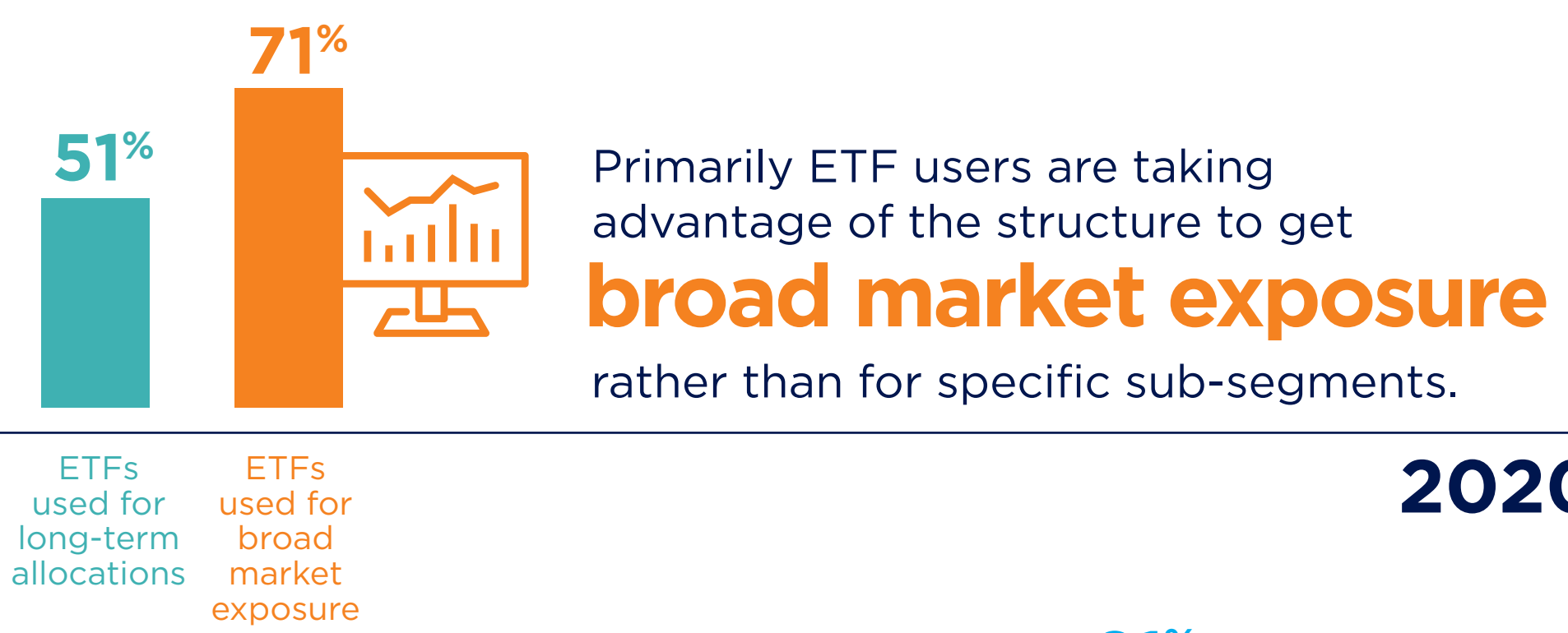


ETF Usage

ETFs used for long-term allocations

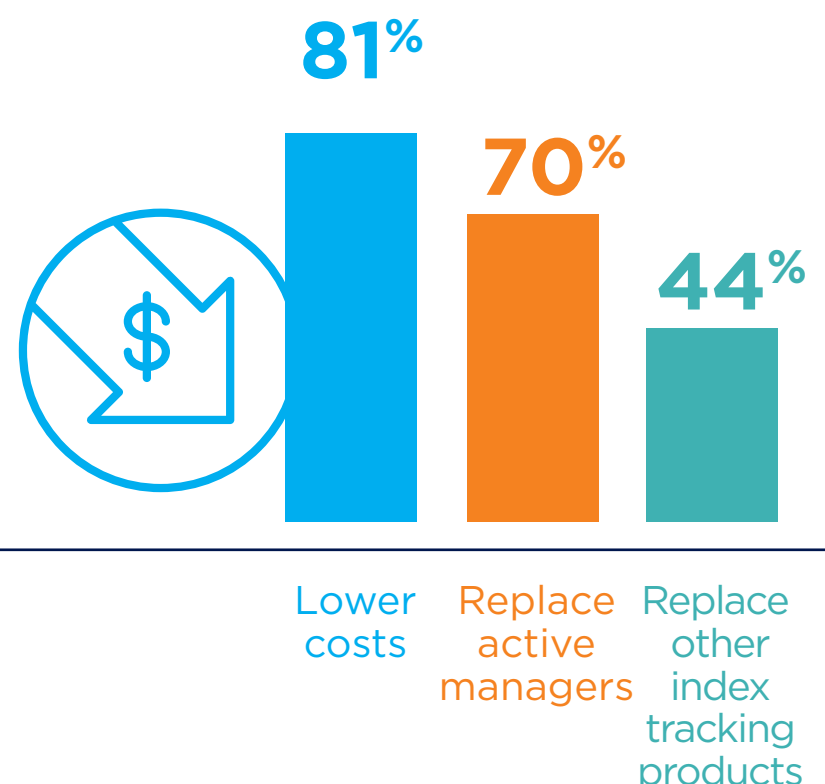


2020



2020

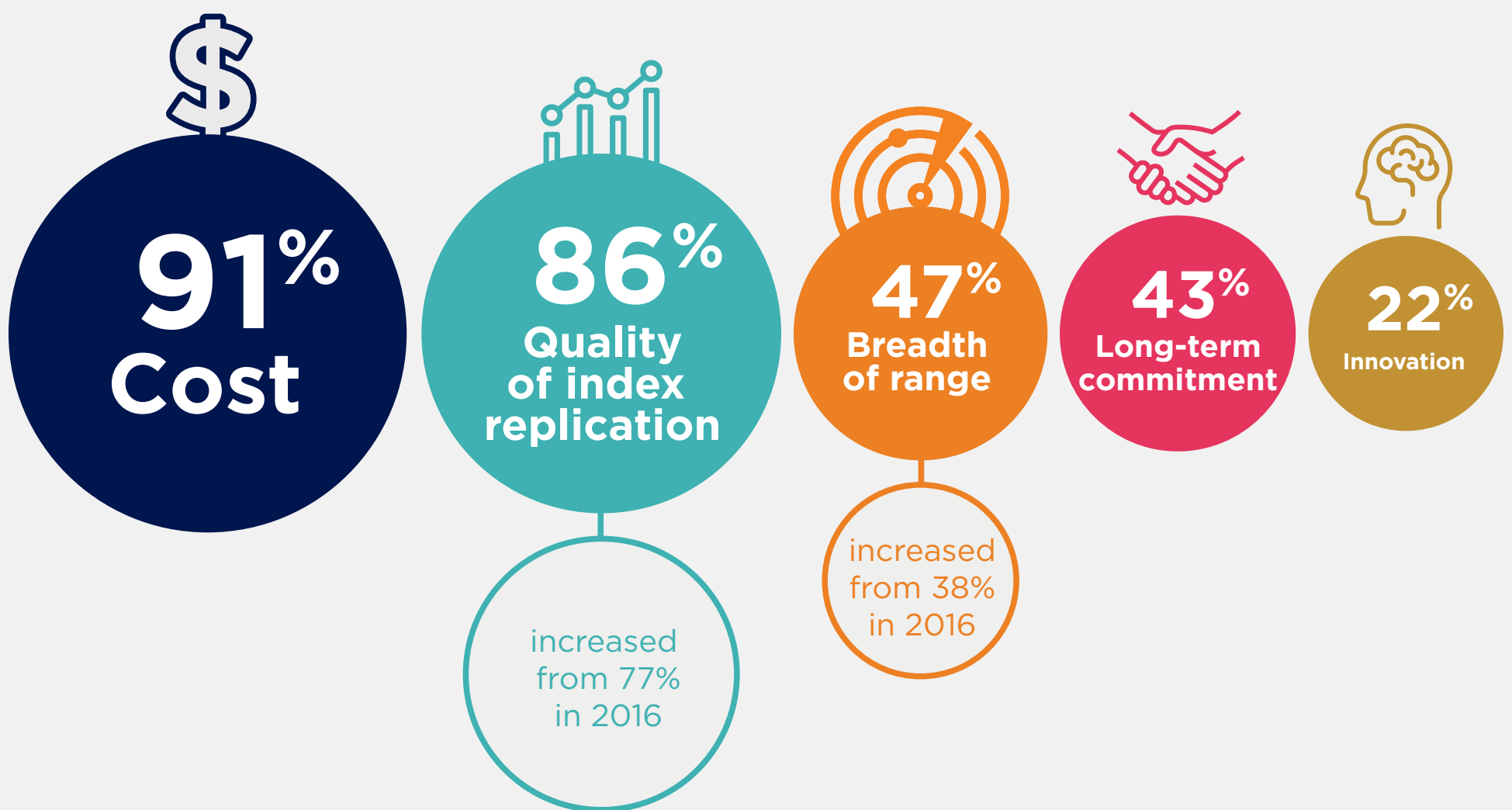
Most investors use ETFs to lower their costs.



2020

What matters most?

What do respondents consider when choosing an ETF provider?



You can read the whole survey and find out more about smart beta, ESG and ETF investing at amundiETF.com



Important information:

This document is not intended for citizens or residents of the United States of America or to any "U.S. Person", as this term is defined in SEC Regulation S under the U.S. Securities Act of 1933. The "US Person" definition is provided in the legal mentions of our website www.amundi.com. Investors are subject to the risk of loss of capital.

Promotional & non-contractual Information which should not in any way be regarded as investment advice, an investment recommendation, a solicitation of an investment offer, or a purchase of any financial securities. The accuracy, completeness and relevance of the information, forecasts and analyses provided are not guaranteed. They have been prepared from sources considered reliable and may be altered without prior notice. The information and forecasts are inevitably partial, provided on the basis of market data observed at a particular moment, and are subject to change. This document may contain information from third parties that do not belong to Amundi ("Third Party Content"). Third Party Content is provided for information purposes only (for illustration, comparison, etc.). Any opinion or recommendation contained in Third Party Content derives exclusively from these third parties and in no circumstances shall the reproduction or use of those opinions and recommendation by Amundi AM constitute an implicit or explicit approval by Amundi AM. Information reputed exact as of July 2020.

Reproduction prohibited without the written consent of the Management Company. Amundi ETF designates the ETF business of Amundi Asset Management. This Document was not reviewed/stamped/approved by any Financial Authority. Amundi ETF funds are neither sponsored, approved nor sold by the index providers. The index providers do not make any declaration as to the suitability of any investment. A full description of the indices is available from the providers.

This document may not be distributed to any person other than the person to whom it is addressed without the express prior consent of Amundi. Amundi Asset Management, French "Société par Actions Simplifiée" - SAS with capital of €1,086,262,605 - Portfolio Management Company approved by the AMF (French securities regulator) under no. GP 04000036 - Registered office: 90 boulevard Pasteur, 75015 Paris - France. 437 574 452 RCS Paris.